

NIPISSING

U N I V E R S I T Y

Right where
you belong

North Bay, Ontario, Canada 🇨🇦

INTERNATIONAL
ADMISSIONS
2024

nipissinglakers.com





Top 10 Reasons to Choose Nipissing



1 Picture-Perfect Campus

Naturally beautiful, featuring state-of-the-art facilities.



2 Best Residences in Canada

We're ranked #1 in residence living in Canada!* Enjoy a private room of your own in a four-bedroom apartment-style suite. > [See page 12](#)

3 Top-Ranked Student Services

Benefit from the support of the #1 student services in Canada.* > [See page 13](#)

4 Hands-On Learning

Get real-world experience through co-ops, placements, and internships. > [See page 6](#)

5 Small Class Sizes

Small class sizes mean it's easy to meet new people, get to know your professors and engage in lively discussions.

6 Athletics

Go Lakers! Nipissing University has a wide range of intramural, club and varsity level sports to keep you on your game. > [Visit nulakers.ca](#)



* Among primarily undergraduate universities in Canada, Maclean's 2023



7 Friendly Community

From the moment you connect with Nipissing University, you'll immediately feel part of this friendly and supportive community.



8 Scholarships

Take advantage of over \$4.9 million in scholarships, bursaries and awards available to students. ➤ See page 8

9 Undergrad Research

Gain experience conducting graduate-level research as an undergraduate student.

10 Our Grads Get Jobs

Over 96% of Nipissing University students find employment within six months of graduating.

CONTENTS

Areas of Study/Programs	2	About North Bay	10	English Language Proficiency	17
Dual Degrees, Post-Baccalaureate Diplomas and Certificates	4	Student Centre, Library, Athletics . . .	11	Admission Requirements	17
Experiential Learning	6	Residence	12	Degree Requirements	18
Scholarships	8	Student Services & Support	13	Concurrent Education Requirements	20
Financial Planning	9	Map of Campus	14		
		Admissions: How to Apply	16		

Areas of Study



We have a variety of options to structure and customize your degree. For admissions requirements please see page 18. For a full list of program offerings, please visit nipissingu.ca/programs

Undergraduate Programs

Ancient Studies

Anthropology

Biology

Business

Concentrations in: Accounting, Entrepreneurship and Innovation Leadership, Finance, Human Resources, International Business, and Marketing

Child and Family Studies

Commerce* (only as a Dual Degree with BA or BSc)

Computer Science

Criminal Justice*

Streams in: Corrections, Criminal Justice Studies, Criminology, and Policing

Data Science

Economics

Education (6-year Concurrent, or Consecutive, a 2-year program for those students who have already completed a 3 or 4 year undergraduate degree.)

English Studies

Environment and Physical Geography*

Environmental Biology and Technology*

Environmental Geography*

Fine Arts^Δ

Gender Equality and Social Justice

Geography

History

Indigenous Studies

Liberal Arts*

Liberal Science*

Mathematics

Nursing*

Philosophy

Physical and Health Education*

Political Science

Psychology

Religions and Cultures

Social Welfare and Social Development

Social Work*

Sociology

* Not available as a minor

^Δ Fine Arts Minors are available in: Art History and Visual Studies; and/or Studio Arts.

Graduate Programs

Please note: Students interested in pursuing graduate programs should connect with sgs@nipissingu.ca and international admissions internationaladmiss@nipissingu.ca for more information about graduate programs and services available to international graduate students.

Master of Arts (History)

Master of Arts (Sociology)

Master of Environmental Science

Master of Environmental Studies

Master of Science (Kinesiology)

Master of Science (Mathematics)



No specific degree or major is required for Law, Medical, MBA, or Veterinary schools. Nipissing University offers all prerequisite courses required for admission to these programs.

Minors

In addition to your main degree, you may choose to study additional subjects. The following minors are offered at Nipissing, subject to availability. Minors are also available in the undergraduate areas of study (on the previous page) with a few exceptions marked by an asterisk.

Business Minors:

- Accounting**
- Business Administration**
- Corporate Social Responsibility**
- Entrepreneurship**
- Finance**
- Human Resources**
- International Business**
- Marketing**

Chemistry

Environmental Science

Film

Fine Arts Minors:

- Art History and Visual Studies**
- Studio Arts**

French

Human Rights

Legal Studies

Media, Culture, and Communications

Media, Representation and Social Justice

Physics

Spanish

Study of State Violence (War, Atrocity, and Genocide)

Nursing students not only have access to simulated learning labs on campus, but may have an opportunity to complete their experiential learning placements at the North Bay Regional Health Centre – a top tier hospital that is only a few minutes walk from residence and campus.

Certificates

Certificates are earned by completing a selection of courses within a degree program. Please see the Admissions Chart on page 20 for certificates eligible with your program.

Applied Behaviour Analysis (ABA) – Lifespan

Archaeological Monitoring

Bilingualism

Conflict Resolution and Negotiation

Digital Classics

Digital Humanities

Early Intensive Behaviour Intervention (EIBI) – Autism Spectrum Disorders (ASD)

Environmental Management

Forest Resource Management and Conservation

Game Design and Development

Geomatics

Health Studies and Gerontology

iLEAD Business Experience

Neuroscience

Program Evaluation and Applied Research (PEAR)

Societies in Transition: Reciprocity, Relationship, and Reconciliation Histories

Study of State Violence (War, Atrocity, and Genocide)



Areas of Study (continued)

Dual Degrees

Bachelor of Commerce Dual Degree

If you would like to combine Business with an Arts or Science program, Nipissing offers you the opportunity to study both and complete a Bachelor of Arts or Bachelor of Science degree with a Bachelor of Commerce degree in as little as five years. This dual degree allows you to study a wider range of general interest and career specific subjects. For admissions requirements, please see page 12. For more information on getting a dual degree, please contact the International Recruitment Office at internationaladmiss@nipissingu.ca or call (705) 474-3450 ext. 4433.

Concurrent Education

Nipissing offers a 6-year concurrent program that leads to you earning both an honours undergraduate degree in your discipline of choice (except Nursing and Social Work), and a Bachelor of Education degree. For further details visit nipissingu.ca/education

Second Degree Applicants

Students possessing an undergraduate degree may proceed to a second undergraduate degree program in another area of study. Students may be admitted to a second degree program if they hold a recognized university degree from an accredited university.

A second degree in Nursing may require the repeating of core credits taken in the first degree, if they are more than 10 years old.

Post-Baccalaureate Diplomas

(2 year program)

Post-Baccalaureate Diplomas are available to international applicants who have already graduated with an undergraduate degree from a recognized university. Unless otherwise stated below applicants must meet Nipissing's English Language Proficiency requirements. Specific details about English language policy can be found on page 17 and at nipissingu.ca/englishproficiency

Post-Baccalaureate Diploma in Artificial Intelligence and Machine Learning Applications

Designed for international students who would like to expand their knowledge in areas ranging from data analytics, "Big Data", high performance computing and parallel computing, game artificial intelligence and other technologies, geomatics, geographic information systems, and computational tools and techniques in the humanities.

Admission consideration will be given to international applicants who have an undergraduate degree in computer science or related discipline (i.e., Data Science, Informatics) from a recognized university with an overall average of 70%.

Post-Baccalaureate Diploma in Environment and Sustainability

Designed for international students who would like to expand their knowledge of the environment and be introduced to the environmental sector in Canada.

Admission consideration will be given to international applicants with an undergraduate degree from a recognized university in science and/or engineering or equivalent with a minimum overall average of 70%.

The Schulich School of Education at Nipissing University is a recognized leader in the field of teacher education. Renowned for graduating exceedingly well-prepared and professionally-minded teachers, the Schulich School will prepare you for teaching and provide you with transferable communication and collaborative skills that are essential to any career.

For more details, visit
nipissingu.ca/schulich

Post-Baccalaureate Diploma in Health and Social Impact

Designed for international students who are interested in individual and population health and social outcomes, and gaining foundational knowledge and skills required to tackle key challenges in health and wellbeing, at the individual, family, and population levels.

Admission consideration will be given to international applicants with an undergraduate degree from a recognized university with an overall average of 70%.

Post-Baccalaureate Diplomas in Business Studies

Students will build a foundation of general business knowledge and may specialize in one of the five areas.

Admission consideration will be given to applicants with a minimum of a 3-year undergraduate degree from a recognized university. Applicants possessing an undergraduate degree in Business will be given admission consideration to an area of study in business other than the one studied within their undergraduate degree. Applicants must have at least six credits of university English and/or Communications (at a recognized English language university in an English-speaking country) prior to admission or have met Nipissing University's English language proficiency requirements through the acceptable English language tests. The English/Communication courses and/or English language tests must have been completed within the two years prior to attending Nipissing University. Otherwise, applicants must meet Nipissing's English Language Proficiency requirements. Specific details about English language policy can be found on page 17 and at nipissingu.ca/englishproficiency

Post-Baccalaureate Diploma in Business Administration

Build your general business knowledge and skills through a broad set of courses including topics on commercial law, change management and business strategy.

Post-Baccalaureate Diploma in Finance

Deepen your financial acumen through the study of topics including portfolio and wealth management, financial derivatives, and risk management.

Post-Baccalaureate Diploma in Human Resource Management

Compliment your study of business foundations with courses in recruitment, industrial relations and human resource planning.

Post-Baccalaureate Diploma in International Business

Focuses on general business in an international context with courses about international marketing, management, and finances.

Post-Baccalaureate Diploma in Marketing

Build upon business foundation courses with a marketing focus with courses in consumer behaviour, communications, sports marketing, and digital marketing.

Post-Baccalaureate Certificates

(1 year program)

Post-Baccalaureate Certificate in Human Resources Management

This certificate is designed for applicants who wish to pursue the HRPA-CHRP designation. Applicants will possess, at minimum, a three-year university degree for admission consideration.

Post-Baccalaureate Certificate in General Management

This certificate is designed for graduates of non-business degree programs who wish to pursue business studies. Applicants will possess a non-business undergraduate degree for admission consideration.



Hands-On Learning

Experiential learning is one of the best ways to apply skills and concepts learned in the classroom to a practical setting. At Nipissing, we offer a wide range of hands-on learning opportunities, resulting in uniquely employable graduates who are ready to lead.

Co-ops, Placements, and Internships

In many programs, experiential learning opportunities are built right into the curriculum in the form of placements, volunteer opportunities, professional internships, co-ops and practicums. Through these experiences, students develop competencies in communication, critical thinking, collaboration, problem solving and leadership that help pave the way for future success.

BBA Co-op Program

Students in the School of Business BBA Co-op Program alternate academic terms on campus with full-time work terms. Students apply theoretical knowledge from course studies in the workplace and return to the classroom with practical workplace experience. Co-op helps students determine their strengths and interests, test-drive potential careers and gain valuable experience in their discipline. Questions? Email business@nipissingu.ca to learn more.

Nipissing hosts an annual Undergraduate Research Conference and invites undergraduate researchers from across Ontario to participate. Learn more at nipissingu.ca/ugrc

iLEAD Business Experience Certificate & Expeditions

Students pursuing the iLEAD Business Experience Certificate have the opportunity to Learn through Experience, Action and Discovery in the form of directed studies, workplace internships, overseas studies and volunteer service to others.

Nipissing offers
**UNDERGRADUATE
RESEARCH
OPPORTUNITIES**



Biidaaban Community Service-Learning (BCSL)

BCSL is a unique experiential learning program that allows students to volunteer within community organizations for course credit through project-based learning or placements. Students can also support Indigenous children and youth through the Biidaaban Youth Group and Biidaaban Academic Support programs. Participants receive training from Elders, Indigenous knowledge holders, faculty, educators and community members prior to their placements.

Interprofessional Simulation Centre

The new Interprofessional Simulation Centre offers an immersive and interactive learning environment designed to replicate a variety of real-life situations, procedures, and environments. The space features four rooms with life-like manikins that can mimic a variety of healthcare and other professional situations, and are used for both emergency and procedural training to enhance competency in practice. Using immersive projection technology, two dedicated spaces can be transformed into healthcare settings such as clinics or hospitals. Additionally, these rooms can mimic any home, school, post-secondary institution or community setting, including disaster scenarios or large group gatherings. Students navigate the immersive environment using interactive touch points and 360-cameras.

Coming soon is a life-like home apartment setting that can simulate a client's home visit and assessment. The space can be staged to represent cases, assist with training social workers and home visitors, and mimic occupational-therapy and physiotherapy visits. The space can also be used to demonstrate challenging cases in the home such as crime scenes.

Biidaaban is an Anishnaabe word meaning "the point at which the light touches the earth at the break of dawn."



Finance Your Education

Your final grades make a big difference. Scholarship averages are calculated using your best six final 4U/4M marks (or provincial or international equivalent) completed as of June 30, 2024. All Canadian and international applicants applying directly from secondary school for September entry will be considered automatically for guaranteed entrance scholarships for Fall 2024 entry – no application needed!

The chart below outlines the 2023-2024 guaranteed entrance scholarships. Please visit nipissingu.ca/highschoolawards for the most up-to-date entrance awards information or email finaid@nipissingu.ca

No application needed!

Guaranteed Entrance Scholarships

Scholarship Average [†]	Year 1	Year 2*	Year 3*	Year 4*	Total Scholarship Value
95% + (39+ for IB)	FREE TUITION	FREE TUITION	FREE TUITION	FREE TUITION	>\$23,000
90-94% (36-38 for IB)	\$2,500	\$2,500	\$2,500	\$2,500	\$10,000
85-89% (33-35 for IB)	\$1,500	\$1,500	\$1,500	\$1,500	\$6,000
80-84% (30-32 for IB)	\$1,000	\$1,000	\$1,000	\$1,000	\$4,000

- Free tuition is based on domestic tuition rate: \$5,781 – \$8,082
- Students are only eligible for the first four years of undergraduate study.
- Concurrent BEd students in years 5 and 6 of study, and Consecutive BEd students in the 2-year program are not eligible for the renewal of these scholarships.

[†] Average based on the best six final 4U/4M courses (provincial or international equivalent) or final IB score (including bonus points).

* Based on cumulative GPA (CGPA) as recorded on April 30th. Students must enroll in no less than 24 credits annually to retain scholarship eligibility.

\$7,500 Schulich Scholarships

- Awarded to selected full-time students entering the first year of an undergraduate degree program with a focus on education
- Concurrent Education, Bachelor of Physical and Health Education, or the Consecutive Bachelor of Education*
- Must have a minimum 80% average and at least one of the following: volunteer work; community involvement; or financial need.

*Please note: Students applying to the 2 year Consecutive Bachelor of Education program should apply for Schulich Scholarships by Jan 15.

Other Bursaries and Awards

There are a number of other donor-established bursaries and awards for which upper year international students may qualify; to be considered, please complete the Web Bursary application that is posted on WebAdvisor (Nipissing's online student portal) the month of October.

International Work Study Program

The International Work-Study program provides part-time, on-campus employment to upper year international students who can prove financial need. International Work-Study is not intended to provide emergency funding; rather, it is to act as a supplement to a student's finances and to provide valuable on-campus employment which is allowed via Citizenship & Immigration Canada (CIC).

Contact the International Studies Office (internationalsupport@nipissingu.ca) for more information.

Create a Financial Plan

A plan helps you achieve your goals on time and on budget. This information is provided for guidance only. These are estimated based on 2023-2024 costs of living on campus for the 8-month academic term and are subject to change from year to year. Please visit nipissingu.ca/feesandpayments for the most current information.

Fees		International Student Fees
Full-time	Tuition (Full-time)	\$23,000
	Ancillary Fees (includes a City of North Bay Bus Pass)	\$1,290
Part-time	Cost per course	\$2300
	Ancillary Fees per course	\$108
	City of North Bay Bus Pass	\$223
Other Expenses		
Residence		\$6,397 – \$7,140 [†]
Personal Costs (does not include travel home)		\$3,500
Estimated Food Costs (approx. \$100/week)		\$3,400
Books and Supplies		\$650 – \$1,300
Student Health Insurance		\$350 [∞]
University Health Insurance Plan		\$756 ^Δ
Full-time Estimated Costs		\$39,343 – \$40,736

[†] Includes refundable \$100 damage deposit.

• Optional on-campus parking (depending on lot): \$257 – \$315

^Δ UHIP (University Health Insurance Plan). UHIP is mandatory for full- and part-time international students: (\$94.50/month x 8 months = \$756); subject to change.

[∞] Student Insurance Plan (SIP) is \$350 which covers Sept 1 – Aug 31.

Students may opt out with proof of existing insurance plan and be reimbursed.



Visit our online calculator for tuition and living expenses:

nipissingu.ca/tuition



Studying at Nipissing

Campus sits on
720 acres
of Canadian Shield forest



North Bay

The City of North Bay, Ontario, is nestled between Lake Nipissing and Trout Lake and is surrounded by numerous protected natural areas, heritage forest parks and historical sites. Approximately a 3½ hour drive from Toronto or 4 hours from Ottawa, our friendly and inviting city is a popular year round destination. Offering plenty of activities, amenities and services, North Bay's vibrancy is only exceeded by its hospitality. In addition to the activities available to you on campus, North Bay offers so much more:

- YMCA with pool
- Arenas (Memorial Gardens hosts our local OHL team, the Battalion)
- Shopping malls, local businesses
- Restaurants and bars
- Downhill ski and snowboarding hills (one in the city, and a second within a 45 min drive)
- Nordic ski clubs
- Biking paths and walking trails
- Golf courses and tennis courts
- Public beaches ideal for swimming and canoeing
- Capitol Centre (features theatre performances and concerts)
- Art galleries
- North Bay Museum
- Community festivals and events
- Transportation via city bus, taxi or online ride service

Getting around town is easy with your full-time student card which doubles as a city bus pass

Check out our community at www.northbay.ca



"As a student from India studying human resources at Nipissing, I have found the staff and faculty to be very warm, welcoming and accommodating to my needs. Nipissing is a multicultural community and I'm proud to be a part of it."
— Suni C., Business Student

Rowing team
photo credit:
Dr. Dean Hay



Hike to Duchesnay Falls, or in winter you can snowshoe or ski the trails, right on campus.

NUSU Student Centre

Situated at the corner of College Drive and Monastery Road, the Nipissing University Student Union (NUSU) Building is a defining feature on the approach to campus, welcoming students and visitors while symbolizing the importance of the student body at Nipissing University. This building features study nooks, a two-storey atrium, restaurant, nightclub, courtyard, outdoor patio, and study rooms. This 32,000 square-foot structure is a great place to study, connect, make memories, and attend concerts and seminars. We look forward to seeing you there!

Robert J. Surtees Student Athletics Centre

Whether you are a varsity athlete, gym enthusiast or weekend warrior, our state-of-the art athletics centre offers everything you need to stay active. The building is located in the heart of campus next to our artificial turf field, making it easy to cheer on our Lakers athletes. Join a fitness class, work out in the weight room, participate in an intramural, play squash or take in a varsity game. Membership is included in your student fees. Visit nulakers.ca for more information.

Harris Learning Library

nipissingu.ca/library • libraryhelp@nipissingu.ca

The Harris Learning Library is your gateway to library services, online instructional tutorials and information resources including electronic and print books, articles and streaming videos. Information resources can be accessed through OMNI (nipissingu.ca/omni), an easy to use academic search tool that provides access to over 23 million items from 18 of Ontario's university libraries. Friendly and knowledgeable staff members provide help in person, by email or phone whether you are on campus, studying online, or at a distance. For those not on campus, further information is available here: nipissingu.ca/library/services



Residence

#1 in

RESIDENCE LIVING
in primarily undergraduate
universities in Canada
- Maclean's 2022

Find out more about our top rated residences
at nipissingu.ca/residence

A private bedroom of your own

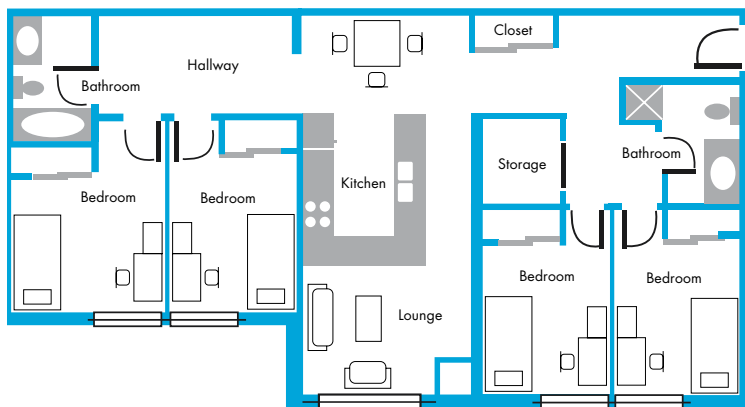
Our top-rated residences will make you feel right at home. You can count on making fast friends within your residence community, and enjoy the luxury of a private room of your own!

Our student leaders, Residence Dons and award-winning residence staff give tutorials on everything from the basics of laundry and cooking to making connections within the community. Our Community Assistants and Academic Dons are additional support for residents in each complex to help with a smooth transition into university.

For full details, visit nipissingu.ca/residence



sample layout



*When the weather gets cold enough,
the residence skating rink is flooded for
students to skate for fun or play a friendly
game of hockey!*

#2 in

STUDENT LIFE STAFF
in primarily undergraduate
universities in Canada
- Maclean's 2022



Student Support

You can count on our support – academically, culturally, financially and personally. Student Development and Services is an excellent resource that will help you maximize your success. For more information on our top rated support, please visit the following services:

Academic Advising

nipissingu.ca/academicadvising

Provides support to undergraduate students who wish to plan their programs or who need advice on any academic matter.

Accessibility Services nipissingu.ca/sas

Supports students with permanent and temporary disabilities while striving to provide an accessible, barrier-free learning environment.

Campus Health Centre

nipissingu.ca/healthcentre

Provides quality services and health care delivery by a licensed physician and nurses available to all students.

Enji giigdoyang, the Office of Indigenous Initiatives

nipissingu.ca/indigenous

Supports Indigenous Student Success through academic, personal and cultural programs offered.

Equity Centre equitycentrenu@nipissingu.ca

A student-run space on campus where students can hang out, learn, or help organize events that raise awareness of equity issues.

International Support

nipissingu.ca/international
internationalsupport@nipissingu.ca

Provides support, programming and orientation to both international degree-seeking students and short-term exchange students who choose to study at Nipissing University.

International Career & Support

nipissingu.ca/intlcareersupport

International and Exchange students can visit the website to find important information about studying and working in Canada, résumé and cover letter tips, and tools and local resources for volunteer and employment opportunities.

Multi-Faith Space Room H340

A quiet, comfortable place for prayer, meditation and reflection.

Off Campus Living ocl.nipissingu.ca

Designed to assist students with sourcing housing off campus and a resource for students to help with everyday living in the community.

Sexual Violence Prevention and Education

nipissingu.ca/sexualviolence

Builds awareness about sexual and gender-based violence on campus and making the necessary supports accessible for those affected.

Student Counselling nipissingu.ca/counselling

Supports all students in achieving positive mental and emotional wellness.

Student Intervention Support

nipissingu.ca/sis

Strives to create an environment that is free from violence and harassment, where students can be safe and feel secure.

Student Learning and Transitions

nipissingu.ca/slt

A group of services and programs aimed at helping students engage in their academic studies and student life at Nipissing University.



Student Exchange Opportunity

Applicants looking to participate in a student exchange at Nipissing University must first connect with their home institution about the application process. Partnering institutions for student exchange with Nipissing are responsible for the selection process of their eligible applicants, and a formal nomination is made by the applicant's home institution directly to the Nipissing International Mobility Office. Once the nomination is received, the applicant will be contacted directly by the Nipissing International Mobility Office to complete all necessary documentation.

For more information about the student exchange program at Nipissing visit:

nipissingu.ca/international or email us at internationalmobility@nipissingu.ca



Campus Map

For virtual tours,
and our interactive
map, visit:

nipissingu.ca/campustours

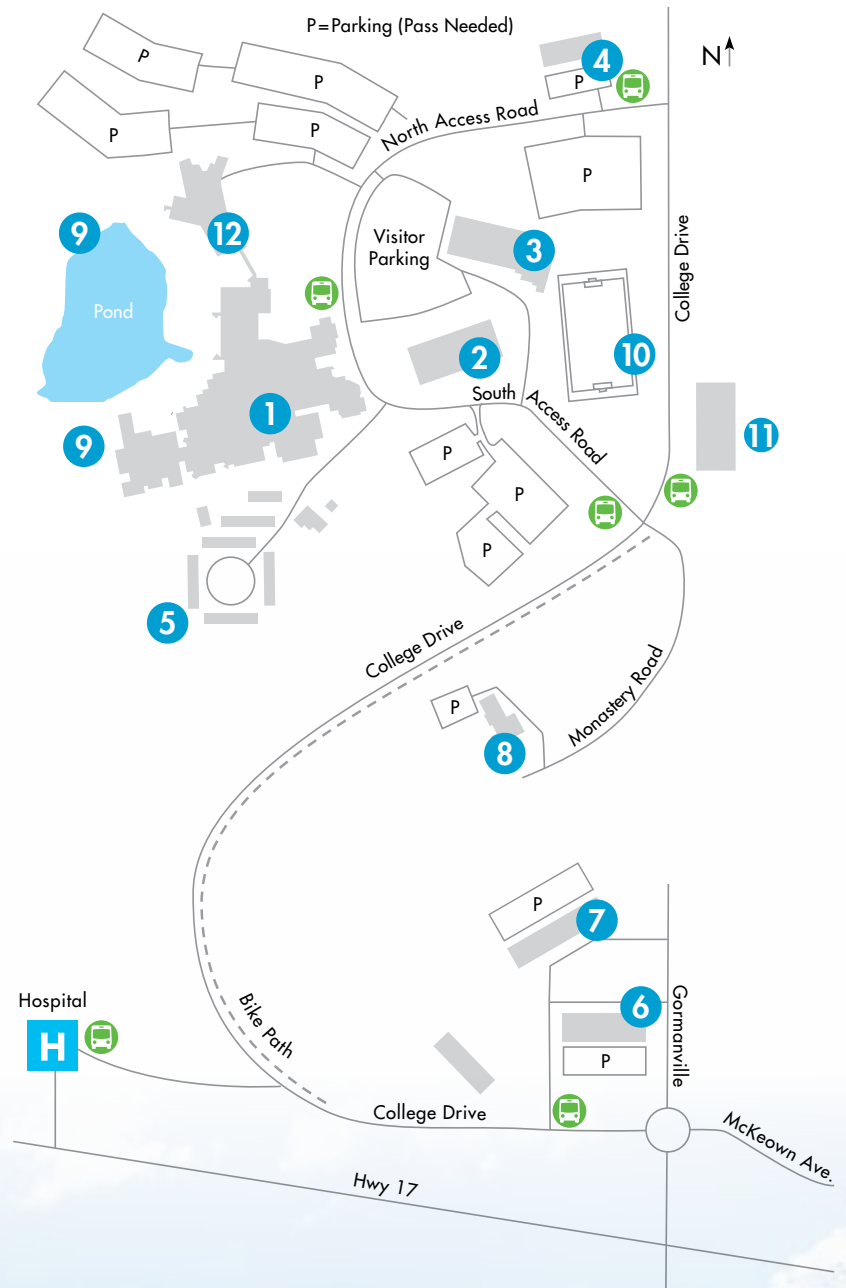


We are proud to
share our campus with
Canadore College,
which adds to the
vibrancy of our
campus community

20 km
of hiking/Nordic ski
trails on campus



- 1 Nipissing Main Building
- 2 Harris Learning Library
- 3 R.J. Surtees Student Athletics Centre
- 4 Governors Residence
- 5 Townhouse Residence Complex (TRC)
- 6 Founders Residence
- 7 Chancellors Residence
- 8 Monastery Hall (Fine Arts)
- 9 Paths to 20 km of trails
- 10 Turf Field
- 11 NUSU Student Centre
- 12 Canadore College
-  City Bus Stop



How to Apply

International Applicants Applying Full-time (studying in Canada on a study permit or studying in another country with no current status in Canada)		
Students attending an Ontario curriculum secondary school	Undergraduate Application	Apply by visiting ouac.on.ca
Students attending a Canadian curriculum secondary school (other than Ontario)	Nipissing International Application Portal	Apply by visiting www.nipissingu.ca/applyintl
All other international applicants		

Please visit nipissinglakers.com or email internationaladmiss@nipissingu.ca for more information.

Required Documentation for Students Applying through the International Portal

All secondary school transcripts should be uploaded to the Nipissing University International Application portal for direct applicants at www.nipissingu.ca/applyintl. Documents not written in English must be accompanied by original notarized English translations from recognized sources. Applicants are required to declare and submit all postsecondary institutions attended or are currently attending. All postsecondary transcripts must be assessed (Credential Evaluation Report, including a Course-By-Course Analysis) by World Education Services (www.wes.org/ca).

International College or University Transfer Applicants

Applicants who have attended or are currently attending a recognized institution will be considered for admission based on their postsecondary studies. Program prerequisites must be met through previous secondary or previous/current postsecondary studies. Further information on prerequisite courses can be found in this brochure under Admission Requirements or at www.nipissingu.ca/admissionschart. Courses completed from a recognized institution may be eligible for transfer credit consideration. Transfer credits are assessed after applicants accept their offer of admission. Students possessing an undergraduate degree may be eligible for admission consideration to a second undergraduate degree program in another area of study.



Get more information on how to apply at:
nipissinglakers.com

English Language Proficiency Policy

Applicants to programs offered at Nipissing University whose first language is not English will be required to achieve the required proficiency level on one of the following tests of English language proficiency for admission consideration.

English Proficiency Test	Undergraduate Programs	Post Baccalaureate Programs	BScN	BEd & Graduate Programs
IELTS	6.5 – No bands less than 6		7 – No bands less than 6.5	6.5 – No bands less than 6.5
TOELF IBT	83 with a minimum score of 20 in reading, listening and writing, and a minimum score of 22 in speaking		93 with a minimum score of 20 in reading and listening and a minimum score of 22 in writing and speaking	
PTE – Pearson Test of Academic English	58 with a minimum score of 56 in each section		63 with a minimum score of 60 in each section	
CAE – Cambridge Assessment English	C1 minimum overall score of 176 with a minimum score of 169			
CAEL/ CAEL Online – Canadian Academic English Language	60 with no band less than 60		70 with no band less than 60	

Admission Requirements

The following are the minimum admission requirements for admission consideration to Nipissing University. Applicants are required to achieve a high overall standing in their studies and must include the appropriate program specific prerequisites depending on the degree program applied to. All applicants are considered on an individual basis. Meeting the minimum admission requirements does not guarantee admission.

	International Baccalaureate (IB)	American School System/ Advanced Placement (AP)	General Certificate of Education (GCE British Patterned Education)	International School Systems
General Requirements	Applicants who have completed the full International Baccalaureate (IB) diploma with at least six subjects, including three at the higher level, with a minimum grade total of 24 (not including bonus points) may be eligible for admission consideration. Transfer credit to a maximum of 30 credits may be granted for courses completed at the higher level or standard level with a grade of 5 or higher.	Applicants who have graduated with a “B” average from Grade 12 at an accredited high school may be eligible for admission consideration. Applicants must present SAT or ACT scores regardless of citizenship. Prerequisite subjects completed at the Freshman or Sophomore level are not acceptable. Transfer credit will be granted to a maximum of 18 credits for AP courses completed with a grade of 4 or better. Nipissing’s SAT code is 4149 and ACT code is 5167.	Applicants who present a minimum of the General Certificate of Education (GCE) with satisfactory standing in at least five subjects, two of which must be at the advanced level, or satisfactory standing in at least four subjects, three of which must be at the advanced level may be eligible for admission consideration. Two Advanced Supplementary/Advanced Subsidiary (AS) subjects are considered equal to one Advanced Level subject for admissions purposes. Transfer credit may be award for A Level results. It is highly recommended that prerequisites be completed at the A Level.	Applicants possessing the requirements necessary for admission to a recognized university in their home country may be eligible for admission consideration. Prerequisite subjects must be met. All prerequisites should be completed at the senior secondary school level. Further information can be found at nipissingu.ca/internationaladmissions or by contacting internationaladmiss@nipissingu.ca

Admission Requirements

Degree Requirements

Degree Program	Application Program Code	Subject of Major Interest	Required Courses			
			International Baccalaureate (IB)	American School System/ Advanced Placement (AP)	General Certificate of Education (GCE British Patterned Education)	International School Systems
Bachelor of Arts (BA)	PA	Ancient Studies, Anthropology, Child and Family Studies ⁵ , English Studies, Environmental Geography ² Gender Equality and Social Justice, Geography ² , History ⁷ , Indigenous Studies, Liberal Arts, Philosophy, Political Science, Psychology ⁶ , Religions and Cultures, Social Welfare and Social Development, Sociology	HL or SL English	Senior level English	English	English
		Economics	HL or SL English; one of HL or SL Analysis and Approaches, or HL or SL Applications and Interpretation	Senior level English; Senior level Mathematics	English; Mathematics	English; Mathematics
		Computer Science ⁴ , Mathematics ⁴	HL or SL English; one of HL or SL Analysis and Approaches, or HL Applications and Interpretation	Senior level English; Senior Mathematics	English; Mathematics	English; Mathematics
	PAJ	Criminal Justice – Corrections; Criminal Justice Studies; Criminology; Policing streams	HL or SL English	Senior level English	English	English
	PAC	Social Welfare and Social Development with a Social Service Worker diploma	HL or SL English	Senior level English	English	English
	PAH	History with an Orientation to a Master of Arts in History	HL or SL English	Senior level English	English	English
Bachelor of Business Administration (BBA)⁵	PBA	Students select an area of concentration at the end of first year: Accounting, Entrepreneurship and Innovation Leadership, Finance, Human Resources, International Business, Marketing	HL or SL English (one of HL or SL Analysis and Approaches, or HL or SL Applications and Interpretation is recommended) ¹	Senior level English; (Senior level Mathematics recommended) ¹	English (Mathematics recommended) ¹	English (Mathematics recommended) ¹
Bachelor of Fine Arts	PFA		HL or SL English	Senior level English	English	English
Bachelor of Physical and Health Education	PPE		HL or SL English; HL or SL Biology (one of HL or SL Analysis and Approaches, or HL or SL Applications and Interpretation is recommended)	Senior level English; Senior or Junior level Biology (Senior or Junior level Chemistry and Senior level Mathematics is recommended)	English; Biology (Chemistry and Mathematics recommended)	English; Biology (Chemistry and Mathematics recommended)
Bachelor of Science (BSc)	PS	Biology ³	HL or SL English; HL or SL Biology; HL or SL Chemistry; one of HL or SL Analysis and Approaches or HL Applications and Interpretations	Senior level English; Senior level Mathematics; Senior or Junior level Biology and Chemistry	English; Biology; Chemistry; Mathematics	English; Biology; Chemistry; Mathematics
		Computer Science ⁴	HL or SL English; one of HL or SL Analysis and Approaches or HL Applications and Interpretations; one of HL or SL Biology, HL or SL Chemistry or HL or SL Physics	Senior level English; Senior level Mathematics; one of Senior or Junior level Biology, Chemistry or Physics	English; Mathematics, one of Biology, Chemistry or Physics	English; Mathematics; one of Biology, Chemistry or Physics

Degree Requirements

Degree Program	Application Program Code	Subject of Major Interest	Required Courses			
			International Baccalaureate (IB)	American School System/ Advanced Placement (AP)	General Certificate of Education (GCE British Patterned Education)	International School Systems
Bachelor of Science (BSc)	PS	Data Science	HL or SL English; one of HL or SL Analysis and Approaches or HL Applications and Interpretation; one of HL or SL Biology, HL or SL Chemistry or HL or SL Physics	Senior level English; Senior or Junior level Mathematics; one of Senior or Junior level Biology, Chemistry or Physics	English; Mathematics; one of Biology, Chemistry or Physics	English; Mathematics; one of Biology, Chemistry or Physics
		Liberal Science – Sequence in two of Biology, Computer Science, Environmental Science, Geology, or Mathematics	HL or SL English; two of HL or SL Chemistry, one of HL or SL Analysis and Approaches or HL or SL Applications and Interpretations, or HL or SL Physics	Senior level English; two of Senior or Junior level Chemistry, Physics or Senior level Mathematics	English; two of Chemistry, Mathematics or Physics	English; two of Chemistry, Mathematics or Physics
		Mathematics ⁴	HL or SL English; one of HL or SL Analysis and Approaches or HL Applications and Interpretations; one of HL or SL Biology, HL or SL Chemistry or HL or SL Physics	Senior level English; Senior level Mathematics; one of Senior or Junior level Biology, Chemistry or Physics	English; Mathematics; one of Biology, Chemistry or Physics	English; Mathematics; one of Biology, Chemistry or Physics
		Environmental Biology and Technology	HL or SL English; HL or SL Biology; HL or SL Chemistry; one of HL or SL Analysis and Approaches or HL Applications and Interpretations, or HL or SL Physics	Senior level English; Senior or Junior level Biology and Chemistry; one of Senior or Junior level Physics or Senior level Mathematics	English; Biology; Chemistry; one of Mathematics or Physics	English; Biology; Chemistry; one of Mathematics or Physics
		Environment and Physical Geography ²	HL or SL English; one of HL or SL Analysis and Approaches or HL or SL Applications and Interpretations; one of HL or SL Chemistry or HL or SL Physics	Senior level English; Senior level Mathematics; one of Senior or Junior level Chemistry or Physics	English; Mathematics; one of Chemistry or Physics	English; Mathematics; one of Chemistry or Physics
		Psychology ^{3,6}	HL or SL English; one of HL or SL Analysis and Approaches or HL or SL Applications and Interpretations; one of HL or SL Biology; HL or SL Chemistry or HL or SL Physics	Senior level English; Senior level Mathematics; one of Senior or Junior level Biology, Chemistry or Physics	English; Mathematics; one of Biology, Chemistry or Physics	English; Mathematics; one of Biology, Chemistry or Physics
Bachelor of Science in Nursing (BScN)	PSN		HL or SL English; HL or SL Biology; HL or SL Chemistry (one of HL or SL Analysis and Approaches or HL or SL Applications and Interpretations recommended)	Senior level English; Senior or Junior level Biology and Chemistry (Senior level Mathematics recommended)	English; Biology; Chemistry (Mathematics is recommended)	English; Biology; Chemistry (Mathematics is recommended)
Bachelor of Social Work (BSW)⁸	PSW		HL or SL English (minimum grade of 4)	Senior level English (minimum grade of 70%)	English (minimum grade of C)	English (Minimum grade of 70% or equivalent)
Bachelor of Arts (BA) or Bachelor of Science (BSc) combined with Bachelor of Commerce⁵	PAB, PSS		The regular requirements for the Bachelor of Arts (BA) or Bachelor of Science (BSc) major applied to.	The regular requirements for the Bachelor of Arts (BA) or Bachelor of Science (BSc) major applied to.	The regular requirements for the Bachelor of Arts (BA) or Bachelor of Science (BSc) major applied to.	The regular requirements for the Bachelor of Arts (BA) or Bachelor of Science (BSc) major applied to.

Admission Requirements for Concurrent Education

Degree Program	Application Program Code	Subject of Major Interest	Required Courses			
			International Baccalaureate (IB)	American School System/ Advanced Placement (AP)	General Certificate of Education (GCE British Patterned Education)	International School Systems
Concurrent Bachelor of Arts (BA)/Bachelor of Education (BEd) <i>Primary/Junior Junior/Intermediate Intermediate/Senior</i>	PE, PEA, PEB	Ancient Studies, Child and Family Studies ⁵ , English Studies, Environmental Geography ² , Gender Equality and Social Justice, Geography ² , History ⁷ , Indigenous Studies ⁵ , Philosophy, Political Science, Psychology ⁶ , Religions and Cultures, Social Welfare and Social Development, Sociology	HL or SL English (minimum grade of 4); one of HL or SL Analysis and Approaches or HL or SL Applications and Interpretations (minimum grade of 3)	Senior level English (minimum grade of 70%); Senior or Junior level Mathematics (minimum grade 60%)	English (minimum grade of C); Mathematics (minimum grade of D)	English (minimum grade of 70% or equivalent); Mathematics (minimum grade of 60% or equivalent)
		Computer Science ⁴ , Mathematics ⁴	HL or SL English (minimum grade of 4); one of HL or SL Analysis and Approaches or HL Applications and Interpretations **one of HL or SL Analysis and Approaches or HL or SL Applications and Interpretations with a minimum grade of 3 is required for admission consideration to Concurrent Education	Senior level English (minimum grade of 70%); Senior level Mathematics **Senior or Junior level Mathematics with a minimum grade 60% is required for admission consideration to Concurrent Education	English (minimum grade of C); Mathematics (minimum grade of D)	English (minimum grade of 70% or equivalent); Mathematics (minimum grade of 60% or equivalent)
	PED, PEF, PEG	Criminal Justice – Corrections; Criminology; Policing streams	SL or HL English (minimum grade of 4); one of HL or SL Analysis and Approaches or HL or SL Applications and Interpretations (minimum grade of 3)	Senior level English (minimum grade of 70%); Senior or Junior level Mathematics (minimum grade 60%)	English (minimum grade of C); Mathematics (minimum grade of D)	English (minimum grade of 70% or equivalent); Mathematics (minimum grade of 60% or equivalent)
Concurrent Bachelor of Business Administration (BBA)⁶/ Bachelor of Education (BEd) <i>Primary/Junior Junior/Intermediate Intermediate/Senior</i>	PEL, PEM, PEN	Students select an area of concentration at the end of first year: Accounting, Entrepreneurship and Innovation Leadership, Finance, Human Resources, International Business, Marketing	HL or SL English (minimum grade of 4); one of HL or SL Analysis and Approaches or HL or SL Applications and Interpretations (minimum grade of 3)	Senior level English (minimum grade of 70%); Senior or Junior level Mathematics (minimum grade 60%) (Senior level Mathematics is recommended) ¹	English (minimum grade of C); Mathematics (minimum grade of D)	English (minimum grade of 70% or equivalent); Mathematics (minimum grade of 60% or equivalent)
Concurrent Bachelor of Fine Arts (BFA)/ Bachelor of Education (BEd) <i>Primary/Junior Junior/Intermediate Intermediate/Senior</i>	PEH, PEI, PEK		SL or HL English (minimum grade of 4); one of HL or SL Analysis and Approaches or HL or SL Applications and Interpretations (minimum grade of 3)	Senior level English (minimum grade of 70%); Senior or Junior level Mathematics (minimum grade 60%)	English (minimum grade of C); Mathematics (minimum grade of D)	English (minimum grade of 70% or equivalent); Mathematics (minimum grade of 60% or equivalent)

1 Students admitted without the recommended Mathematics will be required to complete MATH 1911 or MATH 1912 in their first year.

2 A Certificate in Geomatics is also available to pursuing an Honours degree in these areas.

3 A Certificate in Neuroscience is also available to pursuing an Honours degree in these areas.

4 A Certificate in Game Design and Development is available to students pursuing a degree in these areas.

5 An iLEAD Business Experience Certificate is available to students pursuing one of these degrees.

6 A Certificate in Program Evaluation and Applied Research (PEAR) is available to students pursuing an Honours Specialization, Specialization or a Major in these areas.

7 A Certificate in Study of State Violence (War, Atrocity, and Genocide) is available to students pursuing a degree in these majors.

8 During Year 2 of the Bachelor of Social Work program, students must apply for admission consideration to the professional years (Years 3 & 4) of the program. Admission to the first or second year of the Bachelor of Social Work program does not guarantee acceptance into the professional years.

9 Indigenous Studies is available to Concurrent Education students pursuing an Honours degree with a double major.

The following certificates are available to all students pursuing any degree:

Applied Behaviour Analysis (ABA) – Lifespan
 Archaeological Monitoring
 Bilingualism
 Conflict Resolution and Negotiation
 Digital Classics
 Digital Humanities
 Early Intensive Behaviour Intervention (EIBI) – Autism Spectrum Disorders (ASD)

Environmental Management
 Forest Resource Management and Conservation
 Health Studies and Gerontology
 Societies in Transition: Reciprocity, Relationship, and Reconciliation Histories

Admission Requirements for Concurrent Education (continued)

Degree Program	Application Program Code	Subject of Major Interest	Required Courses			
			International Baccalaureate (IB)	American School System/ Advanced Placement (AP)	General Certificate of Education (GCE British Patterned Education)	International School Systems
Concurrent Bachelor of Physical and Health Education (BPHE)/ Bachelor of Education (BEd) <i>Primary/Junior Junior/Intermediate Intermediate/Senior</i>	PEO, PEQ, PER		HL or SL English (minimum grade of 4); one of HL or SL Analysis and Approaches or HL or SL Applications and Interpretations (minimum grade of 3); HL or SL Biology (HL or SL Chemistry is recommended)	Senior level English (minimum grade of 70%); Senior or Junior level Mathematics (minimum grade 60%); Senior or Junior level Biology (Senior or Junior level Chemistry is recommended)	English (minimum grade of C); Mathematics (minimum grade of D); Biology (Chemistry recommended)	English (minimum grade of 70% or equivalent); Mathematics (minimum grade of 60% or equivalent); Biology (Chemistry recommended)
Concurrent Bachelor of Science (BSc)/Bachelor of Education (BEEd) <i>Primary/Junior Junior/Intermediate Intermediate/Senior</i>	PES, PET, PEU	Biology ²	HL or SL English (minimum grade of 4); HL or SL Biology; HL or SL Chemistry; one of HL or SL Analysis and Approaches or HL or SL Applications and Interpretations ^Δ	Senior level English (minimum grade of 70%); Senior or Junior level Biology and Chemistry; Senior level Mathematics [∅]	English (minimum grade of C); Biology; Chemistry; Mathematics (minimum grade of D)	English (minimum grade of 70% or equivalent); Biology; Chemistry; Mathematics (minimum grade of 60% or equivalent)
		Computer Science ⁴	HL or SL English (minimum grade of 4); one of HL or SL Analysis and Approaches or HL Applications and Interpretations [∅] ; one of HL or SL Biology, HL or SL Chemistry or HL or SL Physics	Senior level English (minimum grade of 70%); Senior level Mathematics [∅] ; one of Senior or Junior level Biology, Chemistry or Physics	English (minimum grade of C); Mathematics (minimum grade of D); one of Biology, Chemistry or Physics	English (minimum grade of 70% or equivalent); Mathematics (minimum grade of 60% or equivalent); one of Biology, Chemistry or Physics
		Mathematics ⁴	HL or SL English (minimum grade of 4); one of HL or SL Analysis and Approaches or HL Applications and Interpretation [∅] ; one of HL or SL Biology, HL or SL Chemistry or HL or SL Physics	Senior level English (minimum grade of 70%); Senior or Junior level Mathematics [∅] ; one of Senior or Junior level Biology, Chemistry or Physics	English (minimum grade of C); Mathematics (minimum grade of D); one of Biology, Chemistry or Physics	English (minimum grade of 70% or equivalent); Mathematics (minimum grade of 60% or equivalent); one of Biology, Chemistry or Physics
		Data Science	HL or SL English (minimum grade of 4); one of HL or SL Analysis and Approaches or HL Applications and Interpretation [∅] ; one of HL or SL Biology, HL or SL Chemistry or HL or SL Physics	Senior level English (minimum grade of 70%); Senior or Junior level Mathematics [∅] ; one of Senior or Junior level Biology, Chemistry or Physics	English (minimum grade of C); Mathematics (minimum grade of D); one of Biology, Chemistry or Physics	English (minimum grade of 70% or equivalent); Mathematics (minimum grade of 60% or equivalent); one of Biology, Chemistry or Physics
		Environmental Biology and Technology	HL or SL English (minimum grade of 4); HL or SL Biology; HL or SL Chemistry; one of HL or SL Analysis and Approaches or HL Applications and Interpretations ^Δ or HL or SL Physics	Senior level English (minimum grade of 70%); Senior or Junior level Biology and Chemistry; one of Senior or Junior level Physics or Senior level Mathematics [∅]	English (minimum grade of C); Biology; Chemistry; one of Mathematics or Physics **Mathematics with a minimum grade of D is required for admission consideration to Concurrent Education	English (minimum grade of 70% or equivalent); Biology; Chemistry; one of Mathematics or Physics **Mathematics with a minimum grade of 60% or equivalent is required for admission consideration to Concurrent Education
		Environment and Physical Geography ²	HL or SL English (minimum grade of 4); one of HL or SL Analysis and Approaches or HL Applications and Interpretations (minimum grade of 3); one of HL or SL Chemistry or HL or SL Physics	Senior level English (minimum grade of 70%); Senior level Mathematics [∅] ; one of Senior or Junior level Chemistry or Physics	English (minimum grade of C); Mathematics (minimum grade of D); one of Chemistry or Physics	English (minimum grade of 70% or equivalent); Mathematics (minimum grade of 60% or equivalent); one of Chemistry or Physics
		Psychology ^{3,6}	HL or SL English; one of HL or SL Analysis and Approaches or HL or SL Applications and Interpretations (minimum grade of 3); one of HL or SL Biology; HL or SL Chemistry or HL or SL Physics	Senior level English (minimum grade of 70%); Senior level Mathematics [∅] ; one of Senior or Junior level Biology, Chemistry or Physics	English (minimum grade of C); Mathematics (minimum grade of D); one of Biology, Chemistry or Physics	English (minimum grade of 70% or equivalent); Mathematics (minimum grade of 60% or equivalent); one of Biology, Chemistry or Physics

^Δ One of HL or SL Analysis and Approaches or HL Applications and Interpretations, with a minimum grade of 3 is required for admission consideration to Concurrent Education

[∅] Senior or Junior level Mathematics with a minimum grade 60% is required for admission consideration to Concurrent Education

North Bay is about a 3.5 or 4 hour drive from Toronto and Ottawa



nipissinglakers.com

  @NURecruitment
X @NipissingU
 @nipissing_university



 **NIPISSING**
UNIVERSITY

ONE STUDENT AT A TIME

International Office • 100 College Drive, Box 5002, North Bay, ON P1B 8L7
tel: (705) 474-3450 ext. 4433 • tty: (877) 688-5507 • fax: (705) 495-1772
nipissinglakers.com • internationaladmiss@nipissingu.ca



If you would like to request this publication in an alternative format please contact the External Relations Office at (705) 474-3450 ext. 4078 or email marketing@nipissingu.ca